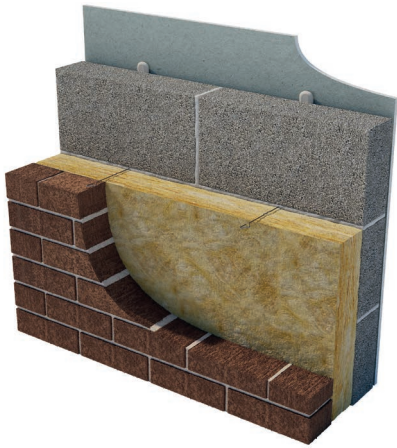


Superwall 36 Cavity Wall Batt

Typical application: External masonry walls



Description

Superglass Superwall 36 is a British Board of Agrément (BBA) approved, non-combustible and water repellent glass mineral wool insulation cavity wall batt. The flexible batt is supplied at 455mm wide to allow easy installation between standard vertical wall tie spacings and minimum on-site cutting and waste.

Application

Superglass Superwall 36 is designed to provide thermal insulation in full or partial fill in new external masonry cavity walls, up to 25 metres in height for full fill and without restriction for partial fill, in new buildings of a domestic and non-domestic nature (additional requirements apply for buildings above 12 metres in height for full fill and above 25 metres in height for partial fill). Superwall 36 is BBA approved for use in all UK exposure zones (subject to conditions detailed in the BBA Certificate and NHBC Standards).



BRE Green Guide Rating

Superwall 36 has a generic BRE Green Guide Rating of A+.



Fire Performance

Superwall 36 has a fire classification of A1 (the highest possible rating) when tested to BS EN 13501-1 Reaction to Fire.



Thermal Insulation

Superwall 36 has a thermal conductivity of 0.036W/mK.



Recycled Content

Superwall 36 is manufactured from up to 84% recycled glass.



Easy & Quick To Install

Manufactured to allow for quick and easy installation.



Superwall 36 | Characteristics

Product dimensions and information

Thickness (mm)	Length (mm)	Width (mm)	Batts per pack	Pack Area (m ²)	R-Value (m ² K/W)	Packs per pallet	Code
50	1200	455	16	8.74	1.35	30	5267C1*
75	1200	455	10	5.46	2.05	30	5269C1
85	1200	455	8	4.37	2.35	30	6270C1
100	1200	455	8	4.37	2.75	30	5271C1
125	1200	455	6	3.28	3.45	30	6272C1
150	1200	455	6	3.28	4.15	30	5273C1

*Non-Standard Products

Thermal Performance

Superwall 36 has a declared thermal conductivity of 0.036W/mK.

Fire Performance

All Superglass products are deemed non-combustible and have a fire classification of A1 (the highest possible rating) when tested to BS EN 13501-1 Reaction to Fire.

Environment

- Manufactured in accordance with ISO 14001:2015 - Environmental Management Systems (EMS).
- Zero Ozone Depletion Potential (ODP) & zero Global Warming Potential (GWP).
- Generic BRE Green Guide Rating of A+.

Recycled Content

All Superglass products are manufactured from up to 84% recycled glass which would otherwise go to landfill.

Standards

Manufactured in accordance with:

- BS EN 13162:2012(+A1:2015) Thermal insulation products for buildings - Factory made mineral wool (MW) products
- BS EN 13172: 2012 Thermal insulation products - Evaluation of conformity.

Quality

All Superglass products are manufactured in accordance with BS EN ISO 9001:2015 - Quality Management Systems (QMS).

Durability

All Superglass products are non-hygroscopic, will not rot, degrade or sustain vermin and will not encourage the growth of mould, bacteria or fungi.

NHBC Standards

In the opinion of the BBA, Superwall 36 Cavity Wall Batt, if installed, used and maintained in accordance with BBA Certificate 89/2231 Product Sheet

2, can satisfy or contribute to satisfying the relevant requirements in relation to NHBC Standards, Chapter 6.1 External masonry walls.

Water Resistance

Constructions incorporating the product and built in accordance with the Standards listed in section 4.4 of BBA Certificate 89/2231 Product Sheet 2, will resist the transfer of precipitation to the inner leaf and satisfy the national Building Regulations.

Vapour Resistance

All Superglass products offer negligible vapour resistance allowing vapour to pass freely through the insulation.

Handling & Storage

All Superglass products are easy to handle, cut and install. The products are supplied compression packed in polythene to provide short term protection only. For long term protection, the product must be stored indoors or under a waterproof covering in order to protect from weather damage. The products should not be left permanently exposed to the elements.

Certification

- CE Marked to BS EN 13162:2012(+A1:2015).
- Designation Code = MW-13162-T2.
- A copy of the Superwall 36 Declaration of Performance (DoP) ref: DOP0006 can be downloaded from the Superglass website.
- Superwall 36 is BBA certified for all UK exposure zones. See certificate number 89/2231: Product Sheet 2 for more details.

Associated Products

Superwall 32 | Superwall 34

Building Information Modelling (BIM)

BIM objects for this product can be downloaded from www.bimstore.co.uk or www.superglass.co.uk



Superglass Insulation Limited. Thistle Industrial Estate, Kerse Road, Stirling, Scotland FK7 7QQ

Technical

Hotline: **0808 1645 134**

Email: technical@superglass.co.uk

Sales

Tel: **01786 451170**

Email: sales@superglass.co.uk

Social



www.facebook.com/superglassinsulationltd



www.twitter.com/superglassins



www.linkedin.com/company/superglass-insulation-ltd

All rights are reserved, including those of photomechanical reproduction and storage in electronic media. Commercial use of the processes and work activities presented in this document is not permitted. Extreme caution was observed when putting together the information, texts and illustrations in this document. Nevertheless, errors cannot quite be ruled out. The publisher and editors cannot assume legal responsibility or any liability whatever for incorrect information and the consequences thereof. The publisher and editors will be grateful for improvement suggestions and details of errors pointed out.

