

INSTALLATION GUIDELINES

Isolating Strip for Blockwork

Before you start installation

1. **Prepare the Base Floor.** It is important that the base floor is **Dry, Clean** (free of dirt and concrete dust) and **Flat**.

Installing the Regupol® Isolating Strip

1. The **Regupol® 6010XHT Isolating Strip** can either be bonded to the base floor or loose laid (if bonding, please contact CMS Acoustics for a list of recommended adhesives). Bonding should be carried out in accordance with the adhesive manufacturer's instructions.

Ensure that a sufficient width of **Regupol® 6010XHT Isolating Strip** is used for the partition and cladding. Any surplus material should be trimmed with a builder's knife.

NB

1. **Regupol® 6010XHT** has a maximum load bearing capacity of $0.8N/mm^2$, therefore this must be taken into consideration when calculating the linear loads. CMS Acoustics can offer guidance on this matter, but it is the province of the consulting engineers to provide working calculations to ensure the load bearing capacity is not exceeded.

2. The recognized technical rules of the industry, and the code of practice requirements of BS8203:2001 "Installation of Resilient Floor Coverings" are to be observed.

3. **Regupol Acoustic Underlayments** can be easily installed providing BS 8203:2001 and our installation guidelines are observed.

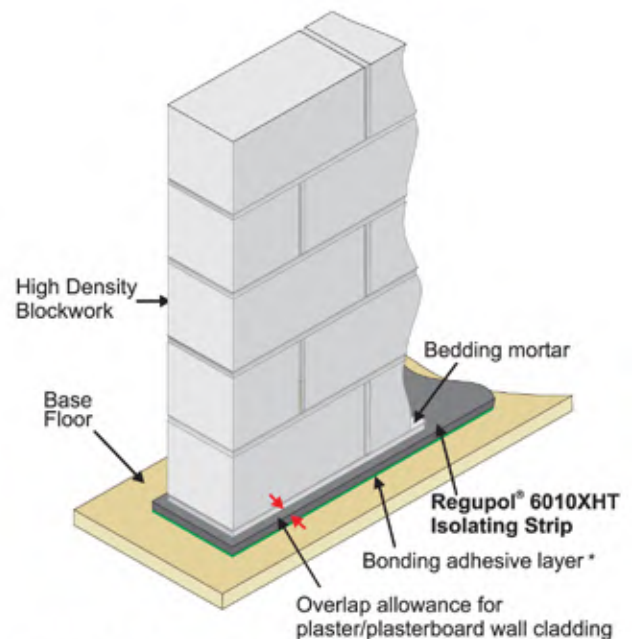
Installation Service

In addition to supply of this product CMS Danskin Acoustic Solutions can provide a listing of competitively-priced approved installers that service anywhere in the UK. Use of this service ensures that installation is performed to the highest standards by tradesmen fully experienced in the specialist skills of fitting CMS Danskin acoustic materials correctly. For further details contact our technical team on 01925 577711.

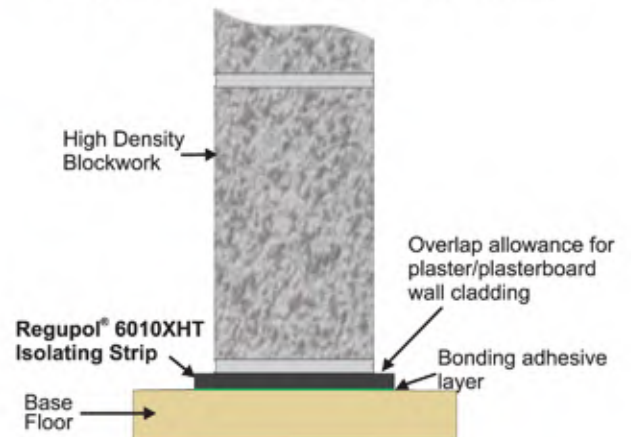
ISOLATING STRIP DIMENSIONS

Thickness	6mm*
Widths	43mm
	100mm
	120mm
	200mm
Length	1000mm

*Other thicknesses available on request



*It is the sole responsibility of the installer as to whether the Regupol isolating strip is bonded in-situ or loose laid.



IMPORTANT: Directions for use are given for guidance only and are not intended to form part of any contract. They should be varied or adapted to suit your particular materials or conditions of use. Goods supplied by the company are made to approved standards from the highest quality raw materials but no warranty or guarantee is given as to their suitability for any particular purpose or application, and no liability is accepted for any loss or damage arising directly or indirectly from the use of the Company's products irrespective of any information given to us as to intended use of such products. It is therefore recommended that prospective users should test a sample of this product under their own conditions to satisfy themselves that the product is suitable for the purpose intended.

CMSIG6014 - 2 1005® CMS Acoustics Solutions Ltd 2005

Regupol® and Regufoam® are registered trade marks of BSW GmbH

Email: info@cmsdanskin.co.uk Website: www.cmsdanskin.co.uk

Scotland Office: 1 Netherton Road Wishaw ML2 0EQ

Central Office: Unit 2 Lyncastle Road Warrington Cheshire WA4 4SN

Southern Office: Unit 8 Harding Way St Ives Cambridge PE27 3WR

t: 01698 356000 f: 01698 372222

t: 01925 577711 f: 01925 577733

t: 01480 463750 f: 01480 495180