

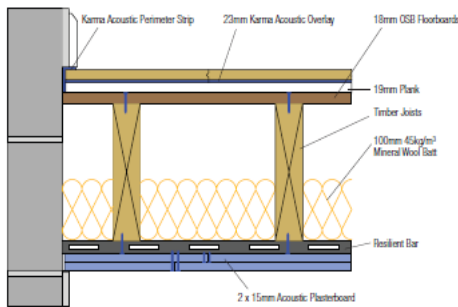
TECHNICAL INFORMATION SHEET



Karma Overlay 23 is a high performance acoustic floor panel with an exceptional performance to height ratio. Comprising an 18mm tongued and grooved 18mm P5 chipboard to a 5mm cross linked polyolefin foam resilient layer. Karma Overlay 23 provides excellent impact and airborne sound insulation in a single product. It is used on an existing floor, new ply or chipboard floor or directly to concrete/screed floors making it an ideal product for refurbishments and new build projects.

Typical Applications New build apartments, hotels, student accommodation and houses with timber joist floors (Pre-Completion Testing). Refurbishment projects where height restrictions exist but reliable performance is still required. This product can be used in the RD FFT5 floor options for E-FC-1, E-FC-2 or E-FS-1.

TECHNICAL INFORMATION



*Laid on 18mm OSB deck, on 235mm I joists with 100mm quilt between joists; RB565 resilient bar and two layers of 15mm acoustic plasterboard.

Criteria/Measured	Airborne Sound Insulation	
	ADE (England & Wales) DnTw+Ctr (dB)	Section 5 (Scotland) DnT,w (dB)
Criteria Conversions	≥43	≥56
Criteria New Build	≥45	≥56
Measured*	58 (-6) dB	58dB

Criteria/Measured	Impact Sound Insulation	
	ADE (England & Wales) L'nT,w (dB)	Section 5 (Scotland) L'nT,w (dB)
Criteria Conversions	≤64	≤56
Criteria New Build	≤62	≤56
Measured*	58dB	58dB

Site tested by independent UKAS accredited acoustic consultant

Benefits of Karma Overlay 23

- Excellent impact and airborne sound performance
- Minimal height increase
- Can be used with any floor finish
- Cost-effective solution
- Non load bearing partitions can be built off the finished floor surface
- Can be used on existing subfloors or concrete/screed floors
- Eliminates the requirement for a damp proof membrane
- Versatile – can be finished with all types of floor finish
- Tried and tested system
- Quick & Easy to install, offering savings labour
- Fire rating of top layer – Class 0 surface spread of flame to BS 476

Physical Information

- Dimensions: 2400mm x 600mm x 23mm
- Weight: 13.1kg/m²

Accessories

- Karma PVA Adhesive
- Karma Acoustic Perimeter Strip

Additional Information

- Part E – Has demonstrated compliance with Approved Document E (England & Wales)
- GWP <5 – Global Warming Potential of resilient layer
- Recycled – Product made recycled or recyclable materials

Karma Overlay 23 Installation Instructions

Preparation

Storage

All components should be kept inside, under cover and in dry conditions at all times. Panels should be stacked flat on a level surface. Materials should be located into the environment in which they are to be fixed at least 24 hours prior to fixing.

Subfloor Tolerances

The subfloor evenness tolerances must not exceed +/- 2mm per 2 metre run. The base floor must also be clean and completely dried out. The floor should be clear of pipes and other obstacles.

Partitions

Lightweight non load bearing partitions can be supported on top of Karma Overlay 23 boards.

Installation Procedure

- 1) Place Karma 5mm thick x 100mm wide flanking strip between Karma Overlay 23 and perimeter walls and existing door frames during installation. This will reduce flanking sound transmission.
- 2) Lay Karma Overlay 23 with the grooved edges or cut edges facing the perimeter walls. Use the off cut from the final panel in the first row to commence the next row. Do not start a row with an off cut less than 250mm long. Lay panels in a brick bonded fashion.
- 3) While laying boards apply a liberal amount of Karma PU adhesive to the grooves of the T&G joint and tightly butt the boards together. Wipe off excess adhesive with a damp cloth. Avoid walking on the boards until the adhesive has dried.

Expansion Provision

Expansion provision should be calculated at a rate of 2mm per metre run. This may be provided in a gap perimeter walls but intermediate expansion joints may be needed on long runs of flooring.

Tiling

The top surface of Overlay 23 should be primed before tiling. Ensure that a flexible tile adhesive and flexible grout compatible with the P5 chipboard top surface are used to accommodate the movement of the substrate.

